

BOO-TIFUL TASMANIA: THE ULTIMATE HALLOWEEN ROAD TRIP



Highlights

- Explore Tasmania's most scenic towns
- Experience family-friendly Halloween festivals
- Discover Tasmania's natural beauty
- Join spooky after-dark tours
- Indulge in local cafés, bakeries, and restaurants
- Enjoy cosy campervan nights
- Take part in creative Halloween activities
- Spot adorable wildlife on tours

Day 2: Hobart

Distance: 0 Kms **Time:** 0 Hour

- **Morning:** Kick off the day with a visit to the **Hobart Zoo and Aquarium** for the [Boo at the Zoo](#) event — a mix of festive fun, magical moments, and close-up animal encounters for all ages.
- **Afternoon:** After your wild morning, stop by Big W to grab some Halloween decorations and add a spooky touch to your campervan before continuing your Tasmanian adventure.
- **Evening:** As night falls, choose your thrill: join [Tasmania's Most Haunted Tour](#) for a paranormal investigation inside a 19th-century military prison, or dance the night away on the [Fun Bus Halloween Rave](#) — a full Halloween celebration on wheels.
- **Where to stay:** Discovery Parks – Hobart, E Derwent Hwy, Risdon Vale TAS 7016. Powered Site.



BOO at the ZOO, Hobart Zoo and Aquarium

Day 1: Hobart

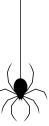
Distance: 18 Kms **Time:** 17 Minutes

- **Morning:** Pick up your GoCheap Campervan and head to the **Federation Concert Hall** for the Tasmanian Symphony Orchestra's [Halloween Spooktacular](#), a fun, family-friendly start to your road trip.
- **Afternoon:** After the show, indulge in Hobart's Halloween treats with a stop at **Queen's Fine Pastry** or **Circle of Life Doughnut Co.** for themed sweets and a well-deserved sugar fix.
- **Evening:** Wrap up the day at [State Cinema Hobart](#) for a classic Halloween movie, then return to your [campsite](#) to enjoy the evening's festivities under the stars.
- **Where to stay:** Discovery Parks – Hobart, E Derwent Hwy, Risdon Vale TAS 7016. Powered Site.

Day 3: Port Arthur

Distance: 92.5 Kms **Time:** 1 Hour 20 Minutes

- **Morning:** Start your day with a scenic drive to historic Port Arthur, taking in Tasmania's beautiful coastal views. Stop at the **Port Arthur Lavender Café** for a hearty breakfast surrounded by tranquil scenery.
- **Afternoon:** Explore the **Port Arthur Historic Site** on a [guided tour](#). Whether you're after rich history or a touch of the eerie, these tours offer a fascinating glimpse into Australia's convict past.
- **Evening:** Head back to your campsite to unwind and enjoy a quiet evening. Cook up a delicious meal in your GoCheap Campervan and relax after a day of discovery.
- **Where to stay:** NRMA Port Arthur Holiday Park, LOT 1 Garden Point Rd, Port Arthur TAS 7182. Powered Site.



Day 4: Bicheno

Distance: 193 Kms **Time:** 2 Hours 42 Minutes

- **Morning:** Drive to Bicheno, a picturesque seaside town on Tasmania's east coast, and stop at **Governors Bicheno** for a relaxed brunch to start your day.
- **Afternoon:** Enjoy the afternoon exploring Bicheno's beaches or visit the famous **Bicheno Blowhole**, where the Tasman Sea puts on a spectacular natural show — just watch out for the occasional splash!
- **Evening:** As night falls, join the [Bicheno Penguin Tour](#) to watch **Fairy Penguins** waddle ashore — a magical, slightly eerie experience that's the perfect Halloween-inspired ending to your day.
- **Where to stay:** Bicheno East Coast Holiday Park, 4 Champ St, Bicheno TAS 7215. Powered Site.



Fairy Penguins, Tourism Tasmania & Chris Bell

Day 5: Launceston

Distance: 158 Kms **Time:** 1 Hour 58 Minutes

- **Morning:** Head to Launceston, the next stop on your Halloween adventure. Start the day with a fun **Halloween-themed breakfast**, like [Monster Smoothie Bowls](#) or [Ghost Pancakes](#).
- **Afternoon:** Explore **Cataract Gorge Reserve**, take the Scenic Chairlift for amazing views, and wander through Cliff Grounds, home to friendly peacocks and wallabies.
- **Evening:** End the day with a cozy night in your GoCheap Campervan — sip hot chocolate, enjoy candy, try out a few easy [Halloween recipes](#), and settle in for a spooky movie marathon under the stars.
- **Where to stay:** BIG4 Launceston Holiday Park, 86 Glen Dhu St, Launceston TAS 7250. Powered Site.



Image: Gorge Scenic Chairlift, Tourism Australia

Day 6: Launceston

Distance: 0 Kms **Time:** 0 Hours

- **Morning:** Start your final day in Launceston with breakfast at **Aroma's Café**, then wander through the city centre for some sightseeing and shopping.
- **Afternoon:** Spend the afternoon at [The Alt Market](#) and [Tassie Pop Culture Market](#), where Halloween-themed stalls, spooky activities, and festive energy fill the streets.
- **Evening:** Wrap up your trip at **Penny Royal Adventures** for the [Zombie Awakening Halloween Party](#) — complete with ghost tours, eerie rides, candy stations, and live music. It's the ultimate grand finale to your Launceston Halloween adventure.
- **Where to stay:** BIG4 Launceston Holiday Park, 86 Glen Dhu St, Launceston TAS 7250. Powered Site.



Penny Royal Launceston, robburnettimages





Day 7: Devonport

Distance: 98.7 Kms **Time:** 1 Hour 10 Minutes

- **Morning:** Continue your Halloween road trip to Devonport and visit the **Mersey Bluff Lighthouse**, one of the town's most iconic landmarks. Take in the stunning coastal views and snap a few photos before heading into town.
- **Afternoon:** Explore the Devonport CBD and then visit the Don River Railway for the [SeaFM Devonport Carnival of Horrors](#) — a family-friendly event with trick-or-treating, meet-and-greets, a haunted house, and a festive Halloween train ride.
- **Evening:** As night falls, experience the [After Dark Session](#) with ghost trains, eerie lighting, and spooky characters, or enjoy a cozy campsite evening with hot chocolate, s'mores, and ghost stories by the fire.
- **Where to stay:** Discovery Parks – Devonport, 13-19 Tarleton St, Devonport TAS 7310. Powered Site.



Mersey Bluff Lighthouse, S. Group

Day 8: Burnie

Distance: 55.3 Kms **Time:** 44 Minutes

- **Morning:** Take a short drive to Burnie and visit the **Burnie Regional Museum** to explore fascinating exhibits on local history and culture. Afterwards, enjoy a relaxed brunch at **The Chapel** in Burnie's CBD.
- **Afternoon:** Spend a leisurely afternoon strolling through the city centre or return to your campervan for some **pumpkin carving** fun — a creative Halloween activity perfect for families, friends, or couples.
- **Evening:** End the day at [Grimmfest](#), Burnie's vibrant Halloween celebration. Enjoy market stalls, food vans, live music, apple bobbing, and costume competitions — a night of spooky, family-friendly fun.
- **Where to stay:** Burnie Ocean View Motel and Caravan Park, 253 Bass Hwy, Burnie TAS 7320. Powered Site.

Day 9: Burnie

Distance: 0 Kms **Time:** 0 Hours

- **Morning:** Ease into the day with a homemade campervan breakfast while watching a classic spooky movie the perfect relaxed start to your morning on the road.
- **Afternoon:** Head to the **Emu Valley Rhododendron Garden** and enjoy 11 hectares of colourful blooms, lakes, and garden paths. Take your time exploring — you might even spot one of the garden's resident platypuses.
- **Evening:** Finish your day at the [Little Penguin Observation Centre](#). Arrive around 30 minutes after sunset for a guided experience offering a close look at Burnie's penguin colony, from courtship to chick rearing and moulting — a magical way to end your Tasmanian evening.
- **Where to stay:** Burnie Ocean View Motel and Caravan Park, 253 Bass Hwy, Burnie TAS 7320. Powered Site.

Day 10: Zeehan

Distance: 112 Kms **Time:** 1 Hours 26 Minutes

- **Morning:** Travel to Zeehan and begin your day at the **West Coast Heritage Centre**, exploring exhibits that showcase the region's fascinating mining history and early settlement life.
- **Afternoon:** For an eerie adventure visit to the **Spray Tunnel**, a 100-metre abandoned railway passage you can walk or drive through, from Tasmania's mining boom era.
- **Evening:** Wrap up your day with a [paranormal investigation](#) at the historic **Gaiety Theatre**, or, for a quieter night, visit **Lake Pieman** for some trout fishing and cook up your catch in your campervan for a peaceful end to the day.
- **Where to stay:** Rosebery Caravan Park, 2 Park Rd, Rosebery TAS 7470. Powered Site.



West Coast Heritage Centre, Tourism Australia

Day 11: New Norfolk

Distance: 281 Kms **Time:** 4 Hours 2 Minutes

- **Morning:** Head out early for the next leg of your Halloween adventure. Once you arrive in New Norfolk, stop at **The Star & Garter Hotel** for brunch to refuel before exploring.
- **Afternoon:** Spend the afternoon strolling through New Norfolk's charming streets, browsing local cafés, restaurants, and antique shops. Keep an eye out — you might find a spooky little souvenir to take home.
- **Evening:** Finish your day with a visit to [Willow Court](#), once one of the largest mental institutions in the Southern Hemisphere. Join a guided tour of the hauntingly mysterious grounds and uncover the chilling stories that linger within its walls.
- **Where to stay:** New Norfolk Caravan Park, 1 Page Ave, New Norfolk TAS 7140. Powered Site.



Gaiety Theatre, After Dark Tours

Day 12: Hobart

Distance: 45.9 Kms **Time:** 42 Minutes

- **Morning:** Start your last day with a delicious campervan breakfast, then visit the **Anglican Church of St. Matthews**, built in 1823 and known as Australia's oldest Anglican church.
- **Afternoon:** Take a short drive back to Hobart and spend the afternoon exploring the CBD, enjoying a little more sightseeing, and picking up a few last-minute souvenirs. Once you've soaked up the final moments of your adventure, return your GoCheap Campervan to the branch marking the end of your spook-tacular **Halloween Road trip!**



Packing tips for a Halloween Road trip in Tasmania

Some things you'll want to bring include:

- Halloween Costumes
- Hat, sunscreen and sunglasses
- Mixture of clothing for different weather/activities
- Appropriate footwear (comfortable shoes)
- Board games + Pack of cards
- Flashlight
- Insect repellent + First aid kit
- Camera/phone + chargers
- Light backpack (to carry food + water bottle)
- Picnic rug & thermos
- Maps, journals

Reminder: Tasmania's weather and wildlife both like to keep travellers on their toes. The conditions can shift quickly — from sunshine to fog or drizzle within hours so always **pack layers** and keep waterproof gear in your campervan. And as you explore, stay **alert** for wallabies, wombats, and possums on rural and coastal roads, especially at dawn and dusk. Slowing down not only keeps you safe but helps protect Tasmania's incredible wildlife!



BOO at the ZOO, Hobart Zoo and Aquarium

HAVE A GREAT TRIP!

